



Joint Legislative Transportation Oversight Committee

January 6, 2017

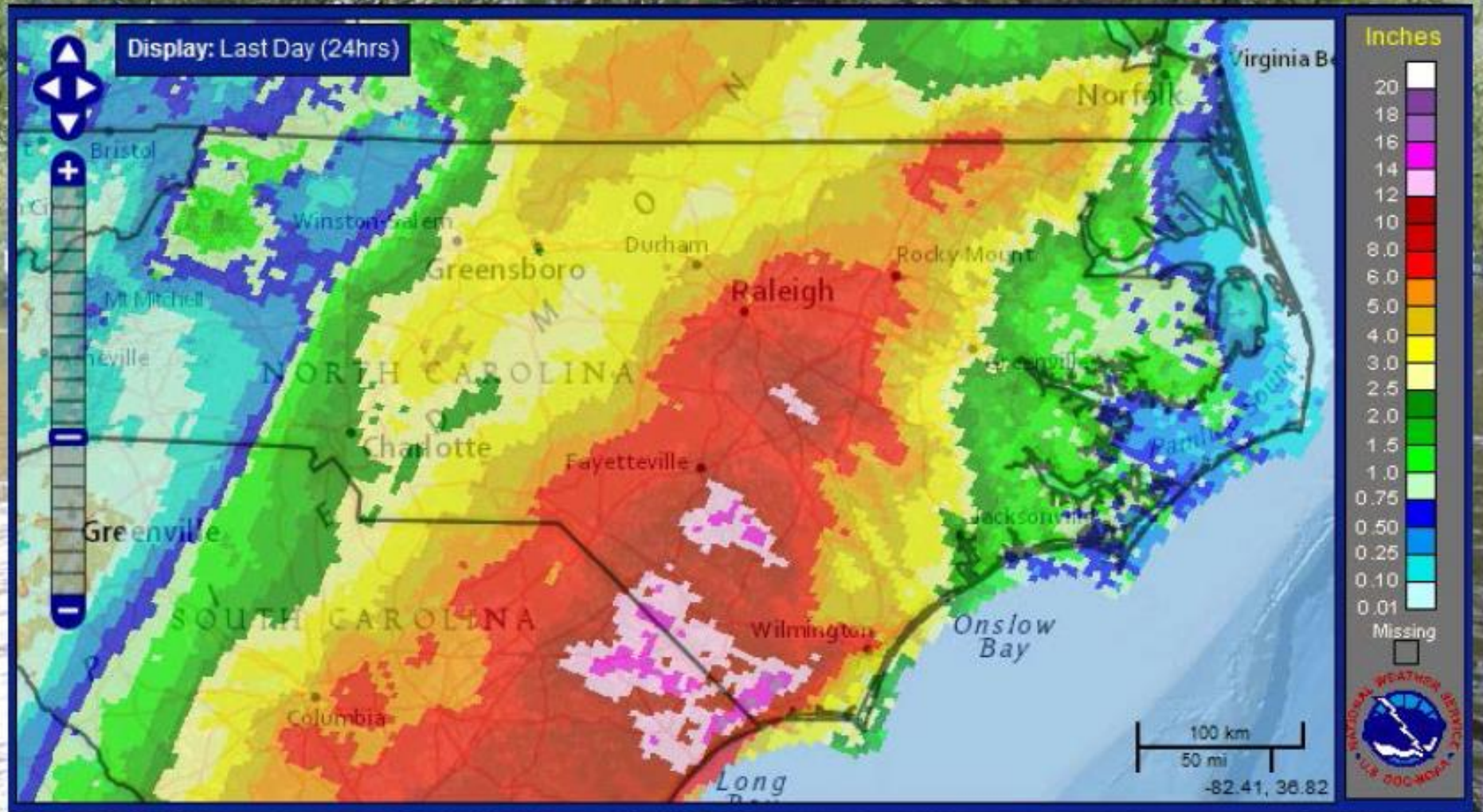
*Hurricane Matthew Recovery Update*

Ron Hancock, PE – Deputy Chief Engineer



# ESTIMATED RAINFALL

LAST 24 HOURS – AS OF 6PM SATURDAY OCTOBER 8<sup>th</sup>



# RAINFALL REPORTS

HURRICANE MATTHEW

Valid Sunday, October 09, 2016 (1:30 PM)



Location	Rainfall
White Oak (Bladen)	16.71"
Goldsboro (Wayne)	15.24"
Hope Mills (Cumberland)	14.71"
Chadbourn (Columbus)	12.90"
Lumberton (Robeson)	12.47"
Elm City (Nash)	11.95"
Edenton (Chowan)	11.88"
Windsor (Bertie)	11.07"
Point Harbor (Currituck)	10.73"
Easons Crossroads (Gates)	10.60"
Garner (Johnston)	10.22"

# WIND REPORTS

HURRICANE MATTHEW

Valid Sunday, October 09, 2016 (as of 2:00PM)



Location	Max Wind Gust
St. James Plantation (Brunswick)	86 mph
Hatteras (Dare)	82 mph
Federal Point (New Hanover)	82 mph
Jacksonville (Onslow)	72 mph
Beaufort (Carteret)	70 mph
Elizabeth City (Pasquotank)	69 mph
Lumberton (Robeson)	67 mph
Cherry Point (Craven)	64 mph
Back Island (Pender)	64 mph
Currituck (Currituck)	62 mph
Greenville (Pitt)	59 mph

## *NCDOT Preparing for Matthew*

Division of Highways – preparation began Tuesday, October 4th

- Frequent communication with field staff
- Field prepared their equipment and personnel
- Reviewed emergency operations procedures



## *Response and Recovery*

- Approximately 90% of the workforce in Divisions 1, 2, 3, 4, 5, 6 & 8 utilized
- Over 360 personnel were mobilized from west and piedmont to assist



# *Response and Recovery – 511 & Call Center*

- 511 – Over 120,000 customer service inquiries
- Call Center – Over 5,000 calls received



## *Recovery and Rebuilding – The Road Ahead!*

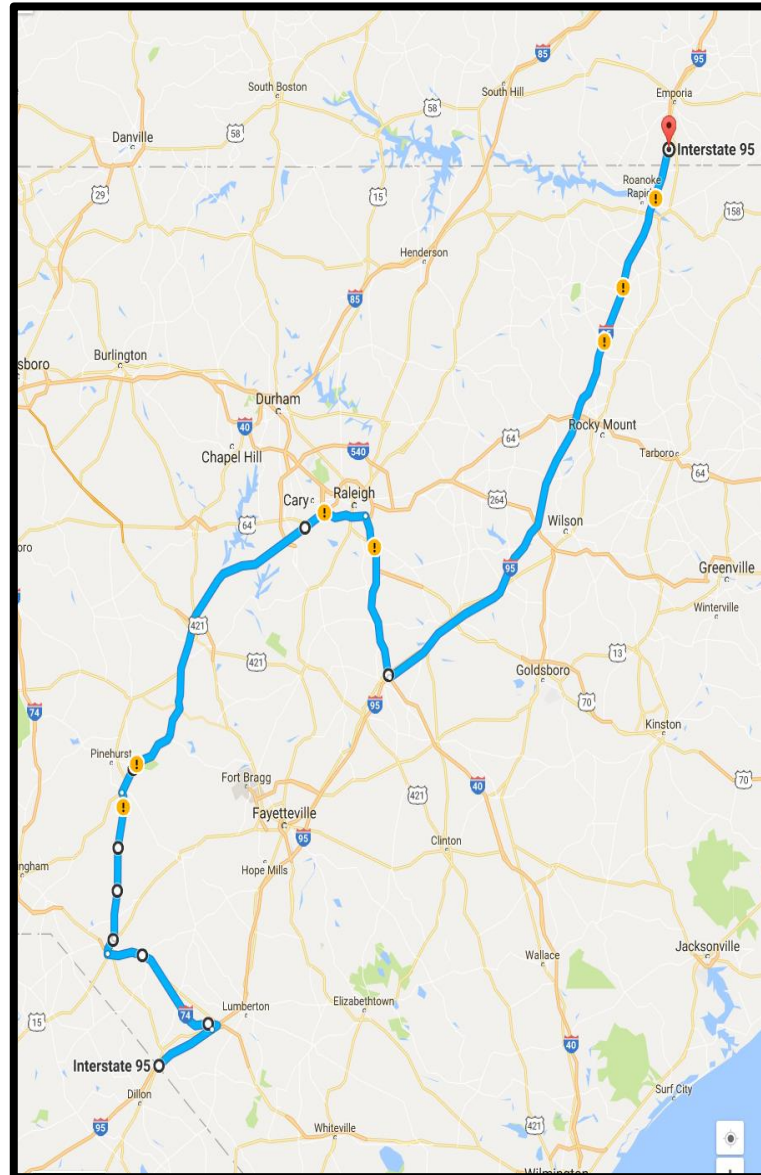


## *Restoring Mobility – I-40/I-95 Benson Repair*

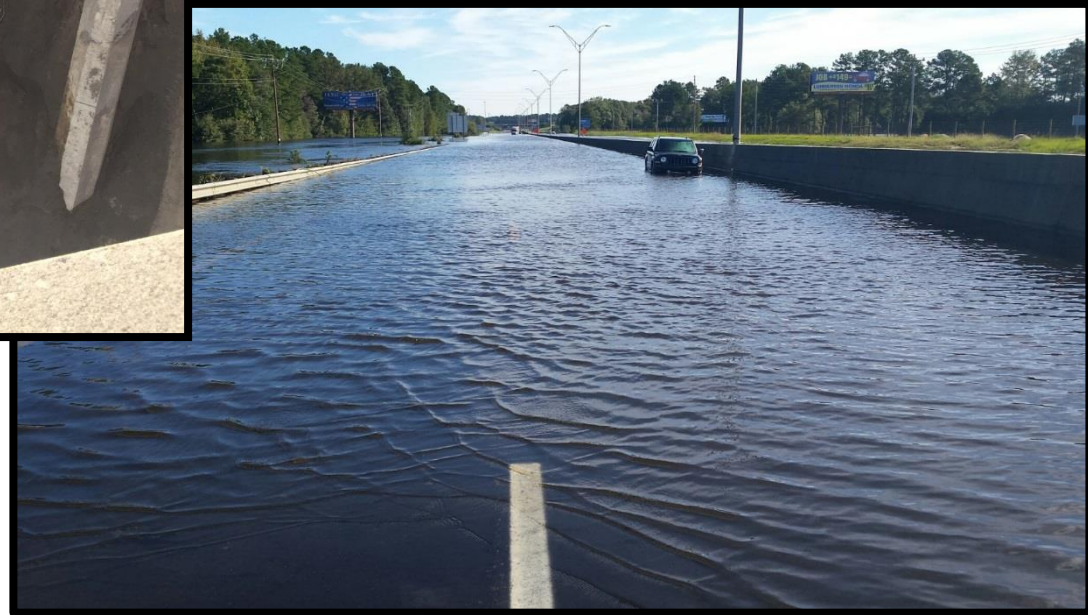


# *Response and Recovery - Detours*

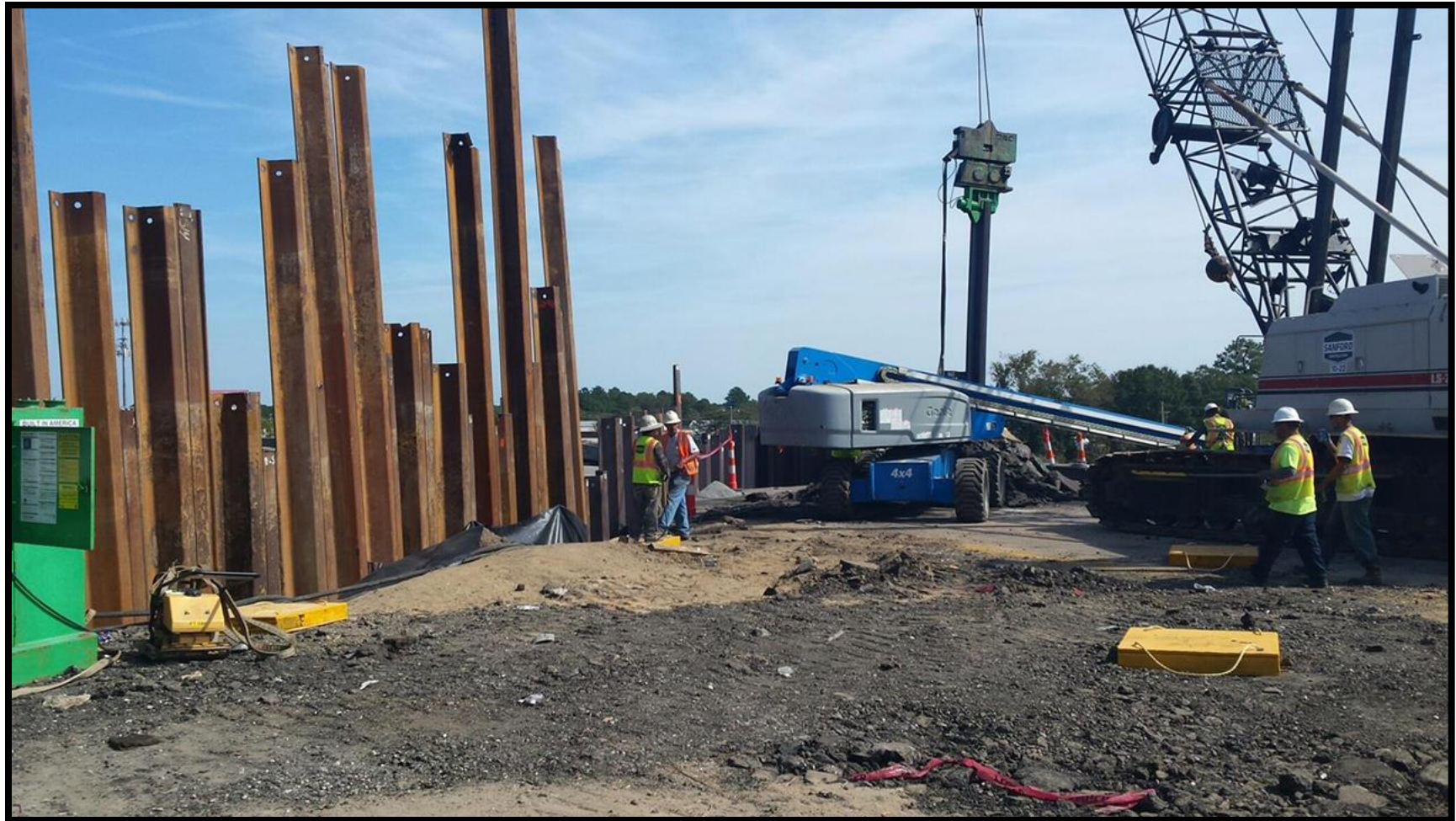
- I-95 north bound and south bound detours
- Coordination with Highway Patrol
- Coordination with local law enforcement
- Coordination with Virginia DOT and South Carolina DOT



## *Restoring Mobility – I-95 in Lumberton*



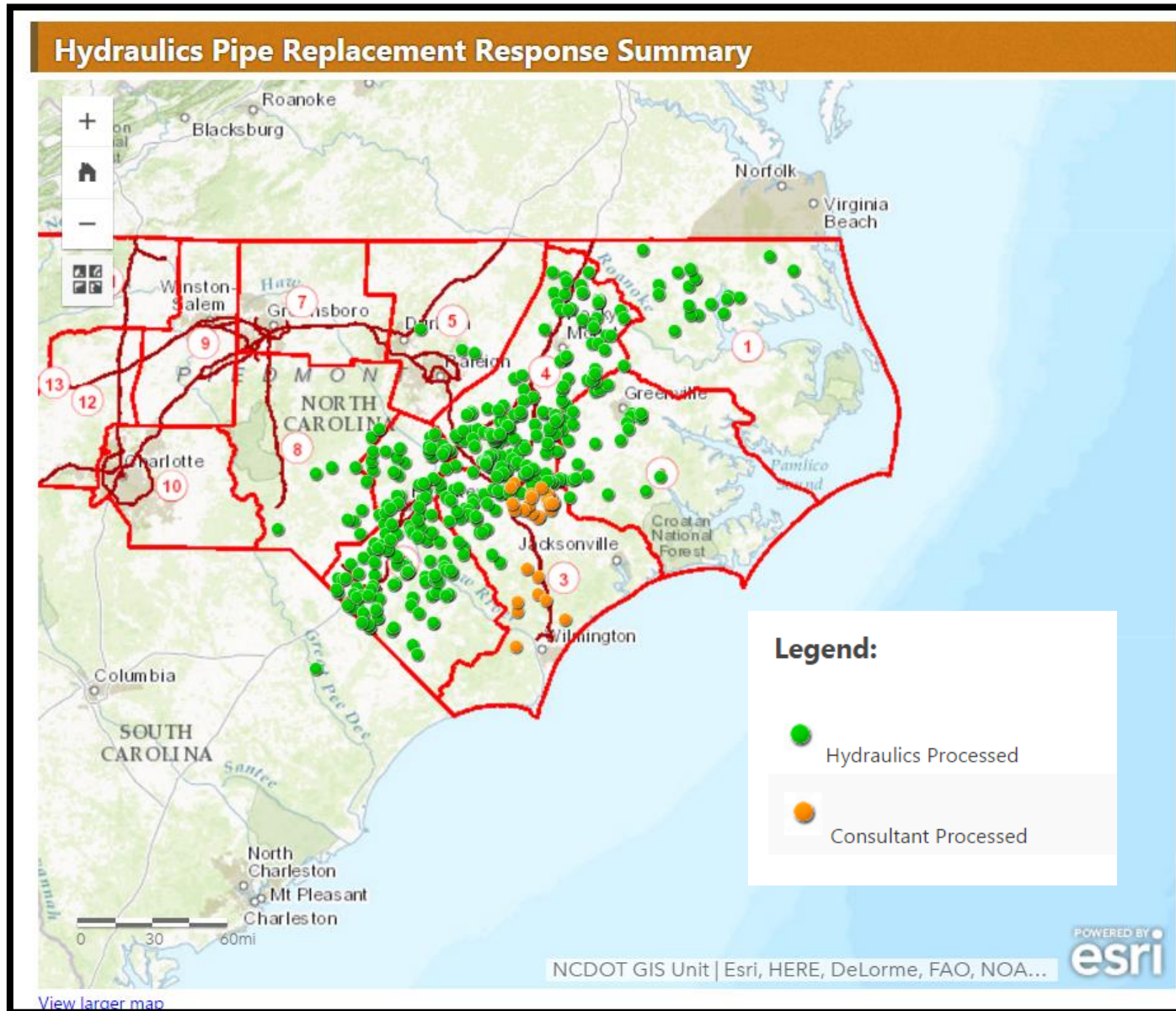
## *Restoring Mobility – I-95 in Lumberton*



## *Restoring Mobility – I-95 in Lumberton*



# Hydraulics Event Response



## *Response and Recovery – Damaged Sites*

- 1,631 identified FEMA route sites
- 697 identified FHWA route sites



## *Response and Recovery – Road Closures*

- At height of storm – over 600 closures
- Currently – approximately 130 closures



# *Response and Recovery – Damaged Sites*

- Of currently closed roads:
  - 25% are expected to be opened by February 1, 2016
  - 75% are expected to be opened by April 1, 2017
  - 100% by mid summer – last 25% requires more substantial repairs and special order materials



# *Response and Recovery – Damaged Sites*

- Multiple large special order pipes to be replaced



# *Response and Recovery – Damaged Sites*

- Reinforced concrete box culverts



# *Response and Recovery – Damaged Sites*

- Replacing box culverts / pipes with bridges



## *Cost Estimates & Anticipated Federal Reimbursement*

- Total estimated cost \$160 Million
- Total estimated Federal reimbursed \$122 Million
- Total estimated NCDOT cost \$38 Million

FHWA funding to date \$5M

FEMA reimbursement process has begun. No FEMA reimbursements to date.



*Questions?*

